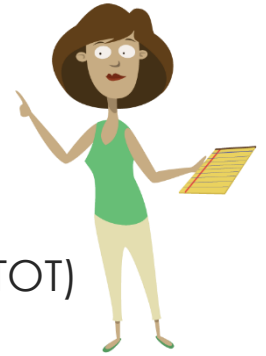




PRE-K FOUNDATIONS TRAINING



An Exclusive Event for ESCs

ESC Early Childhood Trainers are invited to attend the CIRCLE Pre-K Foundations Training-of-Trainers (TOT)

Three-Day TOT in Houston

One session ONLY. A limited number of seats are available.

Date: October 12-14, 2022 (8:00-3:30 each day)

Training Location: University Center Tower (UCT), 7000 Fannin Street, CLI Training Room (14th floor), Houston, TX 77030

| Component | Description | Cost |
|---|---|-------------|
| CIRCLE Pre-K Foundations Training-of-Trainers (TOT) Registration | Three-day in-person TOT. Includes TOT Binder with Speaker Notes, one Interactive Notebook for Teachers, access to PowerPoints and some print files, lunch each day, and onsite parking. | \$ 1,000.00 |
| CIRCLE Pre-K Foundations Trainer Certification | TOT attendees are required to participate in the certification process to gain access to training materials. Certification requires: <ul style="list-style-type: none"> • Full TOT attendance and participation • Written reflection submission • 20-minute virtual presentation after the TOT (Multiple days and times will be available to choose from. Trainers will present an assigned portion of the training to the evaluator via Zoom.) • An overall score of 75% is required for certification. <p>* Note: This certification component is NOT required for CIRCLE Foundations trainers who have been previously certified.</p> | \$ 250.00 |

| | | |
|-----------------------------------|--|--|
| <p>Trainer Starter Kit</p> | <p>Training activities have been carefully selected so that multiple suitcases are no longer necessary to provide Pre-K Foundations Training. This starter kit includes professionally printed training-sized charts and posters, specifically chosen print materials, access to blackline masters for easy organization of training packets, kit list with purchasing links for manipulatives, as well as permission to order Interactive Notebooks from the designated printer.</p> <p>*Note: ESCs may choose to purchase 1 or more Trainer Starter kits. The materials in a Trainer Starter kit are required to conduct the training. Starter Kits may be shared by trainers as long as the trainers are not delivering separate trainings at the same time. Please note, multiple suitcases of manipulatives are no longer needed to deliver this training.</p> | <p>\$ 350.00 (\$400.00 / shipping)</p> |
| <p>Trainer Kit 2</p> | <p>Trainer Kit 2 includes more than 340 pages of full-color activity directions and picture cards that have been professionally printed on heavy card stock and laminated. These print materials are necessary for creating the trainer suitcase; however, these print files will be provided to those who complete the TOT and become certified trainers. Trainers may choose to print and laminate these materials themselves.</p> | <p>\$ 350.00 (\$400.00 / shipping)</p> |

Click or Scan below to REGISTER:

October 12-14, 2022

<https://tinyurl.com/35da4uhh>



CIRCLE Pre-K Foundations Trainer FAQs



1. Why does CLI no longer sell complete sets of trainer materials (i.e., stocked suitcases)?

- As you experience the training, you will observe the many materials that come together to provide this high-quality and engaging training. The CIRCLE Foundations trainings have always been celebrated for providing participants with interactive models of effective pre-K instruction while learning through hands-on activities. In the past, 6 large suitcases were needed to house all trainer materials at a cost of \$5,500.00/set. It also required many months of a full-time position at CLI to create and maintain the materials! Although it is no longer possible to sell fully-assembled training kits, we have gone to great lengths to minimize the number of materials needed while still staying true to the original training's purpose and design. Everything needed to deliver training now fits into 1 tote or suitcase, and we've provided detailed guidance to make it as easy as possible for you to create your own trainer materials. There will be a degree of labor your ESC team will need to dedicate to acquiring and assembling materials. However, ESCs will have more manageable materials to use, and will obtain them at a fraction of the previous cost.

2. About how much will a full trainer kit cost?

- The price of a full trainer kit will depend on whether you buy completely new and start from scratch, or if you pull materials from elsewhere. If starting new, then you can expect about the following:

| Description | Approximate Cost |
|--|------------------|
| CLI Trainer Starter Kit Materials | \$350 |
| Lakeshore Starter Kit Materials: | \$120 |
| Additional Materials w/Books: | \$550 |
| Paper, printing/laminating, and a suitcase or tote | \$330 |
| Estimated Total: | \$1,500 |

3. Can I still use the 6-suitcase version of the training instead of this new version?

- Yes, you are welcome to use the previous PowerPoints and accompanying suitcase materials for training as long as you are a certified trainer.

- 4. What are the options if we don't want to purchase all the trainer materials?**
 - You may continue to use the 6-suitcase version if you have access to those training materials and are trained and certified to do so.
 - Materials are necessary for a successful training. You may wish to share trainer materials with another ESC or use the lists to compile alternate trainer materials.
 - You may contract with CLI Solutions Group to provide CIRCLE Pre-K Foundations training for your ESC.

- 5. Can trainers share trainer materials?**
 - Yes. As long as you are not training the same modules at the same time and all trainers are certified and have attended the TOT for the 2021 version.

- 6. If I am previously certified, do I need to get certified again to provide the 2021 version?**
 - No, you do not need to complete the certification process again. However, to receive a copy of the new Trainer's Manual, you will need to attend the 2021 version of the training. TOT attendance will also allow you to gain access to updated electronic files and to be able to order the Interactive Notebook for teacher participants when you provide training.

- 7. I attended the TOT, but my previously certified colleagues didn't. Can they train with me?**
 - Your previously certified colleagues can certainly assist you, but they won't have access to their own Trainer's Manual, they may not understand how the materials are used, and they won't be certified to deliver the new version. The training has changed quite a bit, so it also wouldn't be easy for them to just "join in."

- 8. If my colleagues are certified but did not attend this version of the training, can I make copies of the *Trainer's Manual* and share my downloaded training files with them?**
 - No. The 2021 version of the training uses different materials and activities and is updated in so many ways that it would be difficult to ensure fidelity of the training if a trainer did not attend this TOT. It is also a violation of the usage explicitly granted on the copyrighted documents.

- 9. Once I am certified, can I provide this training anywhere to anyone?**
 - No. You have received training and certification because you are an Educational Service Center trainer. You may provide this training to districts who contract with the ESC for professional development services or as part of sessions offered at the ESC. You may not provide this training for a personal fee or outside of the state of Texas.

10. Can we provide this training online?

- No. There is no version of this training for online delivery. It requires many materials and it is an interactive, hands-on training, which is meant to be delivered in-person.

11. Why do we have to purchase the Interactive Notebook from a vendor?

- The Interactive Notebook takes the place of the CIRCLE Manual. It is copyrighted and the content belongs to the University of Texas Health Science Center at Houston.

12. What is the maximum number of participants we can train at a time?

- CIRCLE recommends a maximum of 30 participants for the best training experience, but we know that sometimes it is important to be flexible. Groups should not ever exceed 40 participants.

13. Do we always need to have 2 trainers to provide this training?

- It is a lot of content for 1 trainer, but sometimes groups are small and easy to manage. Use your professional judgment to determine how many trainers are required.

14. What if I leave my position at the ESC?

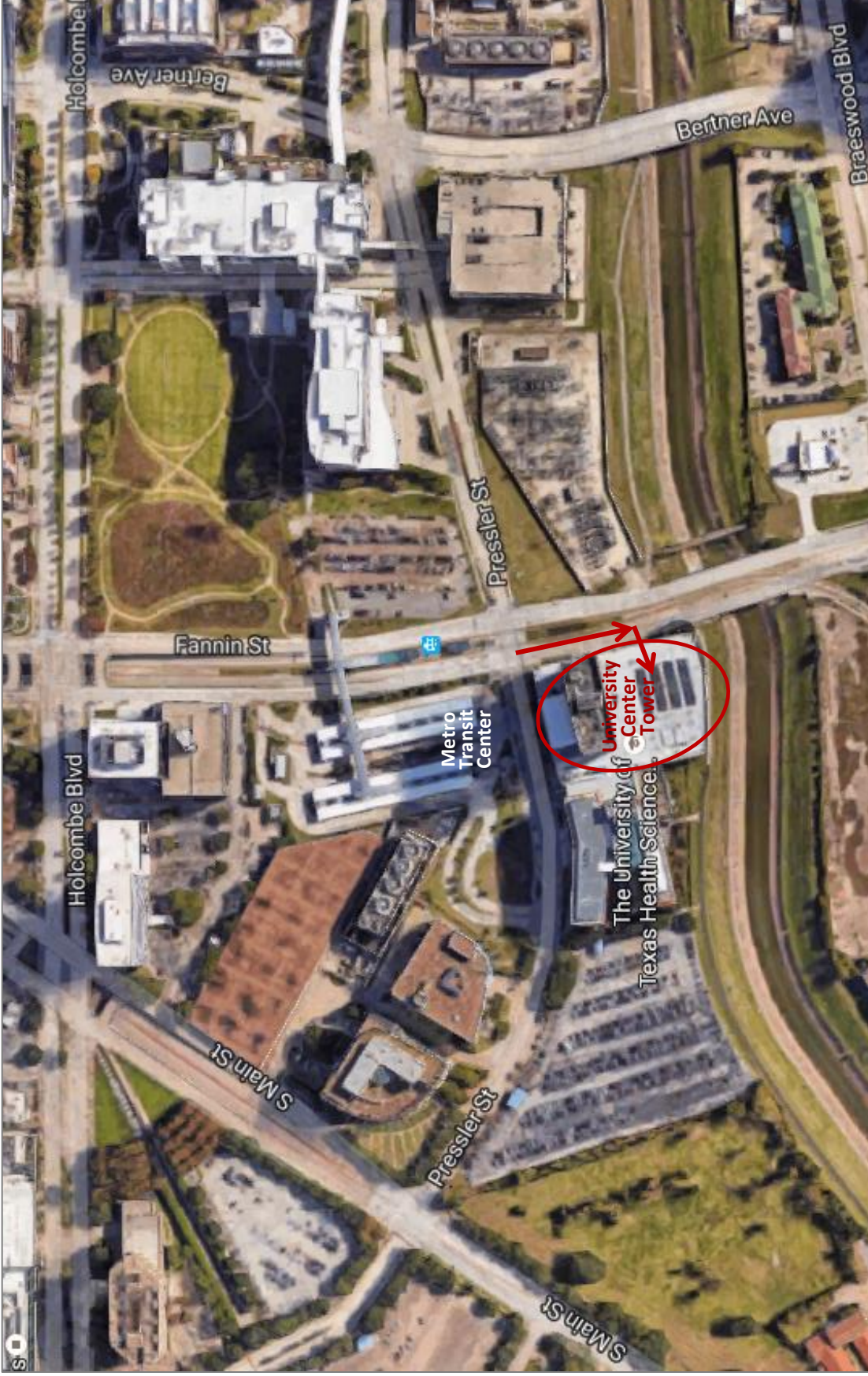
- If you leave the ESC, then you are no longer able to provide training unless you are contracted by an ESC to provide training on behalf of an ESC.

15. What if I need help?

- Please email us at CLISolutionsGroup@uth.tmc.edu we are always happy to help!



DIRECTIONS TO CLI TRAINING / LOCATION & PARKING



The University Center Tower is located on the corner of Fannin and Pressler. The large Metro Transit Center for the Medical Center is located directly across from the building and is a good location landmark. The arrows on the above map indicate the location of the garage entrance. Please see the map on the next page for additional parking information.

DIRECTIONS TO CLI TRAINING / LOCATION & PARKING

University Center Tower - UTHealth
7000 Fannin, Training Room 1430
Houston, TX 77030



- The garage entrance is located on Fannin street.
- Use the entrance marked “Public Parking” and pull a ticket as you enter. Bring the ticket to the training room in order to receive a voucher to cover the cost of parking.
- Take the parking garage elevator to the 1st floor. Transfer to the tower elevators.
- Take the tower elevator to the 14th floor. The training room is 1430.
- If you experience difficulties, please call 713-500-3800.